

2019

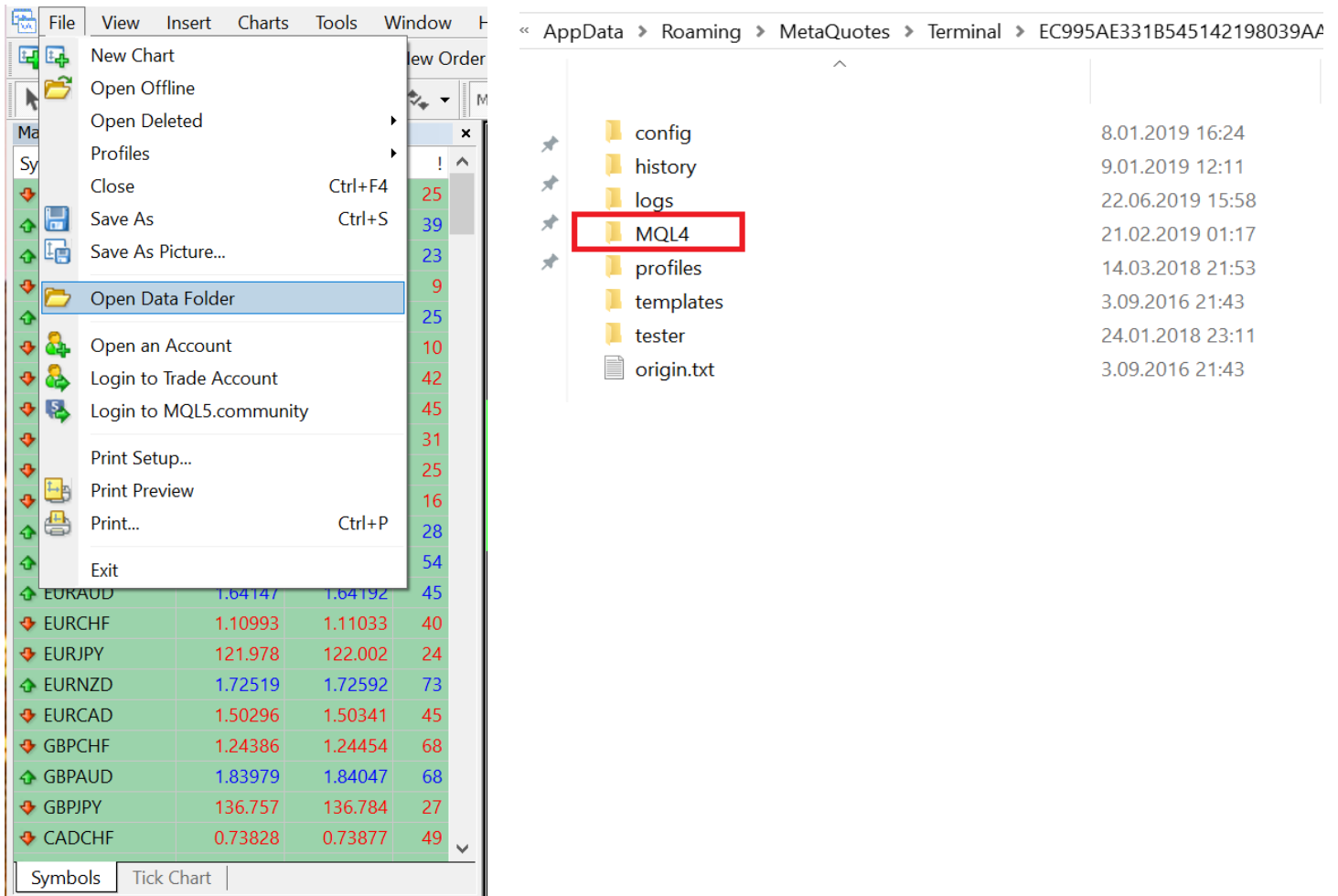
ARYA TRADER

USER GUIDE

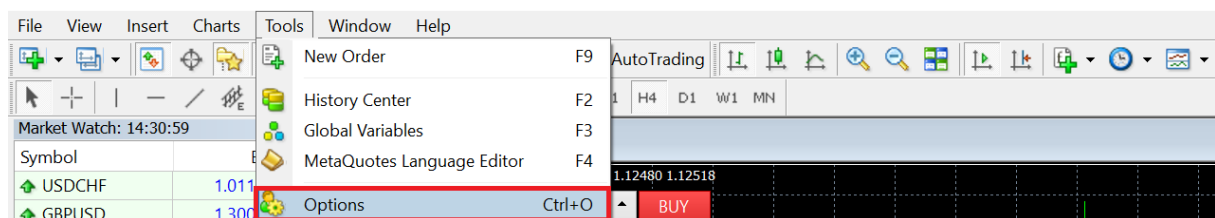
FOREX MARKETING LTD. | Arya Trader | www.aryatrader.com

Installation

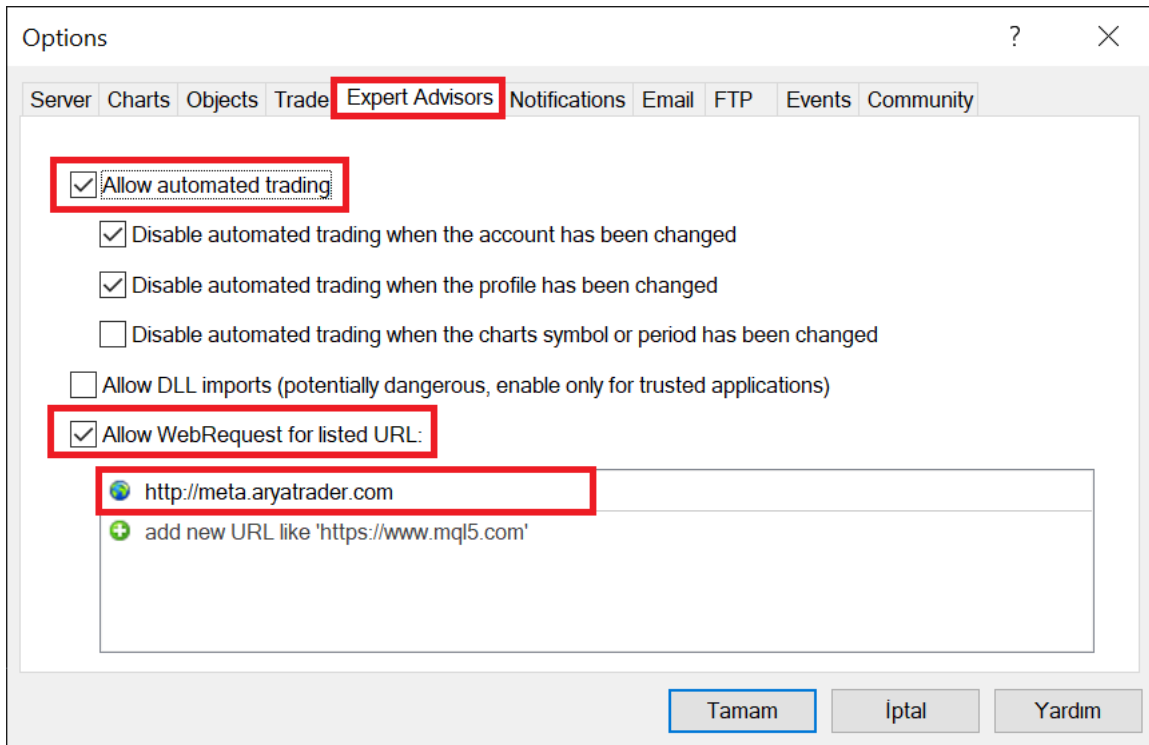
Open MetaTrader software. Click “Open Data Folder” under File tab. Select MQL4-> Experts folder in pop-up screen. Copy the AryaTrader.ex4 folder, which you downloaded under this folder. Then close the Meta Trader program and reopen it.



Settings



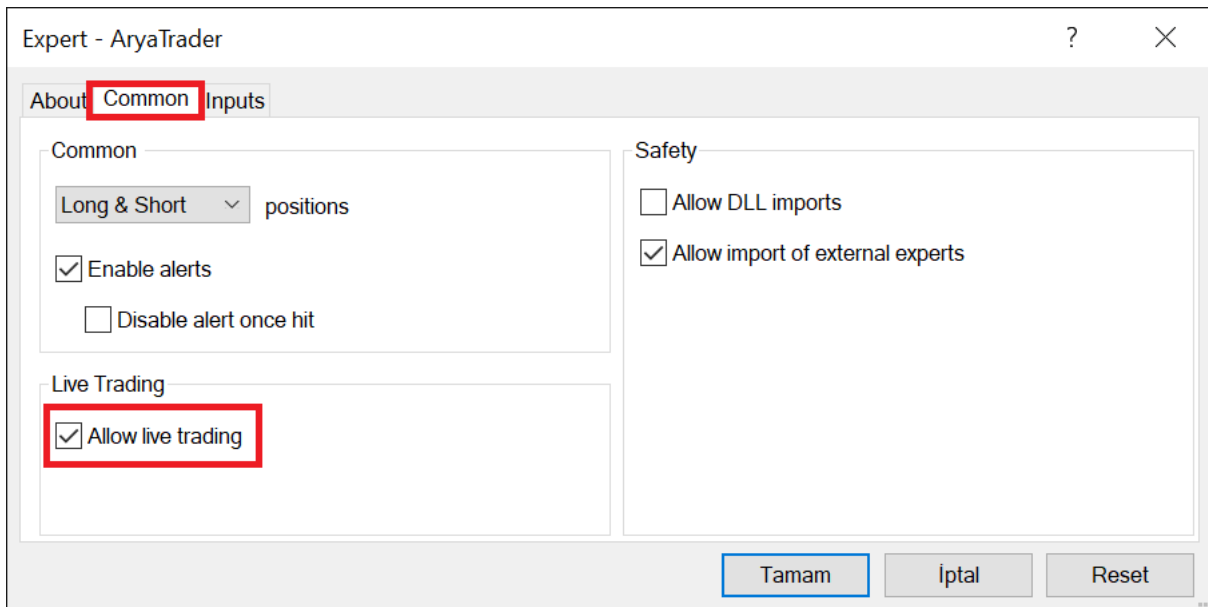
Click Tools -> Options in MetaTrader program. Open Expert Advisor tab in options screen.



Make sure that Allow WebRequest for listed URL is checked and add <http://meta.aryatrader.com> URL address in below section and click OK button.

Adding Expert Advisor

Please double click AryaTrader under Expert Advisors in Metatrader Navigator screen.



Click "Allow live trading" under Common tab.

Input Tab and Settings

Variable	Value
ab UserName	
ab Password	
ab prefix	
ab postfix	
1/2 Lot	0.1
123 TakeProfit	0
123 StopLoss	0
123 Slippage	100
123 MagicNo	1011
SendComment	true
ab Comment	AryaTrader
ab Information	=====Advanced Settings=====
ab AllSymbols	
ab AllLots	
ab AllTPs	
ab ALLSLs	
ab Reverse	

UserName: Type your user name here.

Password: Type your password, which you have defined at Aryatrader.com, here.

LicenseKey: If you are already given a licence key, please type here. If you bought the product directly from aryatrader.com web site, you do not to have a key.

Lot: Please define the lot amount that you want to open. The same amount will be opened for all robots.

TakeProfit: Each robot has its own Take Profit and Stop Loss amounts in AryaTrader. If you leave this field empty, Arya Trader takes automatically pre-defined amounts of each robot. If you define an amount, Take profit will be adjusted accordingly to your input when the transaction opens.

StopLoss: Each robot has its own Take Profit and Stop Loss amounts in AryaTrader. If you leave this field empty, Arya Trader takes automatically pre-defined amounts of each robot. If you define an amount, Stop Loss will be adjusted accordingly to your input when the transaction opens.

Prefix: Symbol names of your broker may vary based on global global broker symbol names. For example if parite name is mEURUSD.pro, m should be written prior to prefix EURUSD .

Postfix: Symbol names of your broker may vary based on global global broker symbol names. For example if parity name is mEURUSD.pro, pro should be written after EURUSD as postfix .

MagicNo: If you use different expert advisors, you can choose among them in order to prevent overlapping. Otherwise, you do not need to change.

SendComment: If you want to send comments to MetaTrader server when you open a transaction, please select it as true

Comment: It will be used when SendComment is selected as true. Your comment is displayed in comment field under your transaction history in your Metatrader account.

Advanced Features

AllSymbols: You can define the names of each parity one by one. For example, gold commodity is available as XAUUSD in Arya Trader'da XAUUSD, you can display it as Gold in your MetaTrader. In this case, you need to write XAUUSD=GOLD; . Each parity can be defined separately by adding ; in the end. For example;

```
EURUSD=EURUSD.pro;GBPUSD=GBPUSD.mx;
```

AllLots: You can use it to define separate lot amounts for each parity. Arya Trader checks first "AllLots" field, if you do not type anything here, it checks "Lot" fields. Define lot amounts after roboID amounts.

```
RoboID=Lot;
```

```
172=0.1;189=1;258=0.7;
```

AllTPs: You can use it to define separate Take Profit amounts for each parity. You may want to define Take Profit amounts in some cases. You can assign Take Profit amounts for each with RoboID number.

For Example:

```
RoboID=TP;
```

```
172=100; 189=80; 258=40;
```

AllSLs: It is used to define separate Stop Loss amounts for each parity. You may want to define Stop Loss amounts in some cases. You can assign Stop Loss amounts for each with RoboID number.

For Example,

```
RoboID=SL;
```

```
172=80; 189=80; 258=40;
```

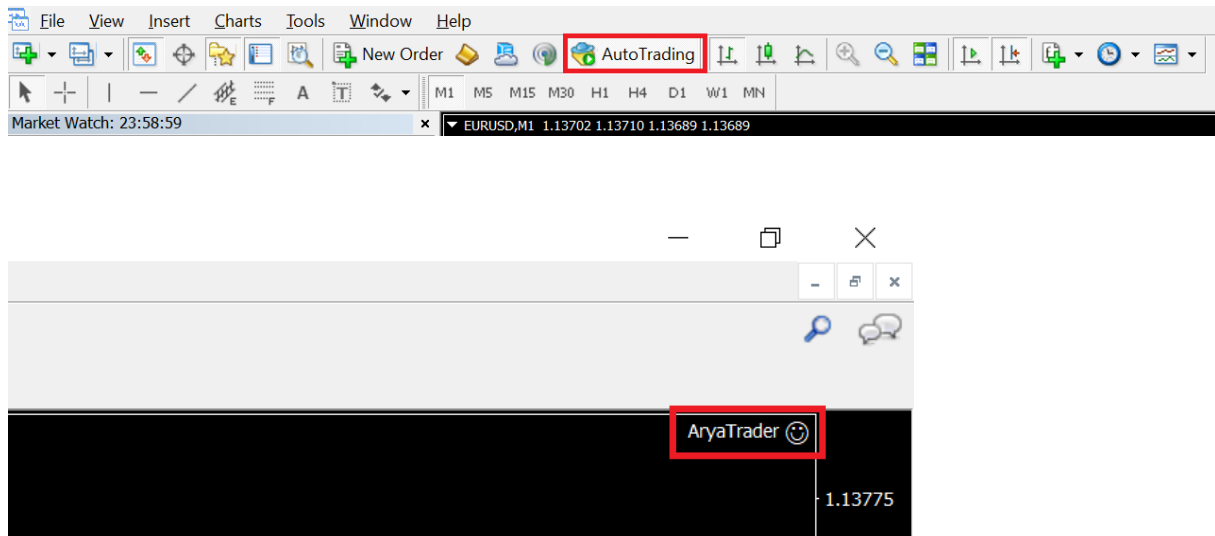
Reverse: You may want to reverse the transaction if a robot generates losses. In this case, you can type semicolons between RoboIDs. When you type a roboID and it opens a BUY transaction automatically, and it creates SELL transaction on your side, and vice versa.

For Example,

```
RoboID;RoboID;
```

```
172;258;
```

After you set up the settings, Auto Trading button should be selected in Meta Trader programm.



If you do the installation properly, you can see the smiley with AryaTrader label at the right top of your window.

Always perform installations on a single chart. All robots you have selected or will select will operate in a single chart. For example when you add 6 robots to your portfolio, you have to install them on only one chart. In case you have installed them on 6 charts separately, the same process opens 6 times! For example, you have selected robots that trade in GBPUSD, USDCAD, USYJPY parities. When you install a **single Arya Trader Expert Advisor** plug in on the EURUSD chart, all the robots trading on this parity will work. The matter of parities differing does not pose a problem. In addition, the choice of the timeframe is also insignificant.

Each robot trades in only one parity and it only opens one transaction at a time. One transaction will not open before the other transaction is closed. These are factors that reduce the risk. Low number of transactions reduces the risk. Opening more transactions will increase your risk. It is recommended that you focus on the number the robots have won, rather than focusing on the number of transactions. You can increase the number of transactions by using multiple robots. **Arya Trader trading logic does not rely on scalping of other robots or more numbers of transactions. It focuses on sustainable profit with less transactions and less risk.**

To use ready-prepared portfolios, you can refer to <https://aryatrader.com/portfolios>.

Arya Trader website also shows the number of transactions that each robot has opened to date and the average duration of open position. Each robot has its own Take Profit and Stop Loss values, which can be found on the detail page of the robots.

In the area of “WAITING FOR”

CLOSE: Transaction is open. In order to receive a new signal and open the transactions, the robot’s transaction that is open must be closed first. After the transaction is closed, a new signal is expected. The Last Transaction area displays the transaction opening date.

NEW SIGNAL: The robot is waiting for the next signal. It indicates when it has closed the last transaction in the Last Transaction area.